

Technical Data Sheet

Compressor model **HYB35MJa**
 Voltage **220-240V 50Hz ~1**
 Refrigerant **R600a**
 Compressor status

APPLICATION

Application	Low Back Pressure
Refrigerant	R600a
Evaporating Temp.	-35,0 °C to -10,0 °C
Expansion	Capillar
Comp. Cooling	Static
Max. ambient temp.	43,0 °C

COMPRESSOR

Displacement	3,50 cm ³
Diameter	18,99 mm
Stroke	12,40 mm
Net Weight	0,00 Kg
Oil type	ISO VG 32 ESTER
Oil charge	120 cm ³
HP	1/7 hp

MOTOR

Voltage/Frequency	220-240V 50Hz
Voltage range	187-254 V
Type	RSIR
Phase number	1 PH
Main W. resist. at 25°C	75,75 Ω
Start W. resist. at 25°C	22,25 Ω

NOMINAL PERFORMANCE

	ASHRAE	CECOMAF
Cooling Capacity	47 kCal/h	41 W
COP	1,14 W/W	0,89 W/W
EER	0,98 kCal/Wh	0,77 kCal/Wh
Input Power	48 W	46 W
Current	0,40 A	0,38 A

APPROVALS



TEST CYCLE CONDITIONS

	ASHRAE LBP (B)	CECOMAF LBP (A)
Evaporating temp. (T _e)	-23,3 °C	-25,0 °C
Condensing temp. (T _c)	55,0 °C	55,0 °C
Liquid temp. (T _{liq.})	32,0 °C	55,0 °C
Ambient temp. (T _{amb.})	32,0 °C	32,0 °C
Suction temp. (T _{suction})	32,0 °C	32,0 °C
Voltage/Frequency	220 V 50 Hz	220 V 50 Hz

ELECTRICAL COMPONENTS

Relay				
Reference				
Voltage				
Resistance				
Protector				
Reference				
Current				
Time check				
Disc temp. (Open/Close)				

This product is approved for R290 and R600a regarding explosion safety according to standard EN 60335-1 and EN 60335-2-34

Technical Data Sheet

ASHRAE

Tc °C	Te °C	Cooling Capacity kCal/h	Consumption W	Current A	COP W/W	EER kCal/Wh
40	-35	28	33	0,28	0,99	0,85
40	-30	38	37	0,32	1,17	1,01
40	-25	49	42	0,35	1,36	1,17
40	-23,3	53	43	0,36	1,43	1,23
40	-20	62	46	0,39	1,55	1,33
40	-15	77	51	0,42	1,74	1,50
40	-10	93	56	0,46	1,93	1,66

45	-35	26	33	0,28	0,91	0,78
45	-30	36	38	0,32	1,08	0,93
45	-25	47	43	0,36	1,26	1,09
45	-23,3	51	45	0,38	1,32	1,14
45	-20	60	48	0,40	1,44	1,24
45	-15	75	54	0,44	1,62	1,39
45	-10	91	59	0,48	1,79	1,54

50	-35	24	34	0,29	0,83	0,71
50	-30	34	39	0,33	1,00	0,86
50	-25	45	45	0,37	1,17	1,01
50	-23,3	49	46	0,39	1,23	1,06
50	-20	58	50	0,42	1,34	1,15
50	-15	73	56	0,46	1,51	1,29
50	-10	89	62	0,50	1,67	1,44

55	-35	22	34	0,29	0,75	0,65
55	-30	32	40	0,34	0,92	0,79
55	-25	43	46	0,38	1,08	0,93
55	-23,3	47	48	0,40	1,14	0,98
55	-20	56	52	0,43	1,24	1,07
55	-15	71	58	0,48	1,40	1,21
55	-10	87	65	0,52	1,56	1,34

60	-35	20	34	0,29	0,68	0,58
60	-30	30	41	0,34	0,84	0,72
60	-25	41	47	0,39	1,00	0,86
60	-23,3	45	50	0,41	1,06	0,91
60	-20	54	54	0,44	1,16	1,00
60	-15	69	61	0,49	1,31	1,12
60	-10	85	68	0,54	1,45	1,25

CECOMAF

Tc °C	Te °C	Cooling Capacity W	Consumption W	Current A	COP W/W	EER kCal/Wh
40	-35	31	33	0,28	0,93	0,80
40	-30	42	37	0,32	1,11	0,96
40	-25	54	42	0,35	1,30	1,12
40	-23,3	59	43	0,36	1,36	1,17
40	-20	68	46	0,39	1,47	1,27
40	-15	84	51	0,42	1,65	1,42
40	-10	102	56	0,46	1,82	1,57

45	-35	27	33	0,28	0,82	0,71
45	-30	38	38	0,32	0,99	0,85
45	-25	50	43	0,36	1,15	1,00
45	-23,3	54	45	0,38	1,21	1,04
45	-20	63	48	0,40	1,31	1,13
45	-15	79	54	0,44	1,47	1,27
45	-10	96	59	0,48	1,62	1,40

50	-35	24	34	0,29	0,72	0,62
50	-30	34	39	0,33	0,87	0,75
50	-25	45	45	0,37	1,02	0,88
50	-23,3	50	46	0,39	1,07	0,92
50	-20	58	50	0,42	1,16	1,01
50	-15	73	56	0,46	1,30	1,13
50	-10	89	62	0,50	1,44	1,25

55	-35	21	34	0,29	0,62	0,54
55	-30	30	40	0,34	0,76	0,65
55	-25	41	46	0,38	0,89	0,77
55	-23,3	45	48	0,40	0,94	0,81
55	-20	53	52	0,43	1,03	0,89
55	-15	68	58	0,48	1,15	1,00
55	-10	83	65	0,52	1,28	1,11

60	-35	18	34	0,29	0,52	0,45
60	-30	26	41	0,34	0,65	0,56
60	-25	37	47	0,39	0,77	0,67
60	-23,3	40	50	0,41	0,82	0,71
60	-20	48	54	0,44	0,90	0,77
60	-15	62	61	0,49	1,02	0,88
60	-10	77	68	0,54	1,13	0,98

EN12900

X	Cooling Capacity (W)	Consumption (W)	Current (A)	Mass Flow (kg/h)
1	198,2536940800	34,6267769445	0,3094485906	1,9384654447225
2	5,2135928904	0,2252689203	0,0007104551	0,05559417472381
3	-1,4977823728	0,8316572084	0,0056021362	-0,0052677172429281
4	0,0321783396	0,0034540767	-0,0000158579	0,00047244756107861
5	-0,0247081532	0,0218166669	0,0001440987	-2,0860532497743E-6

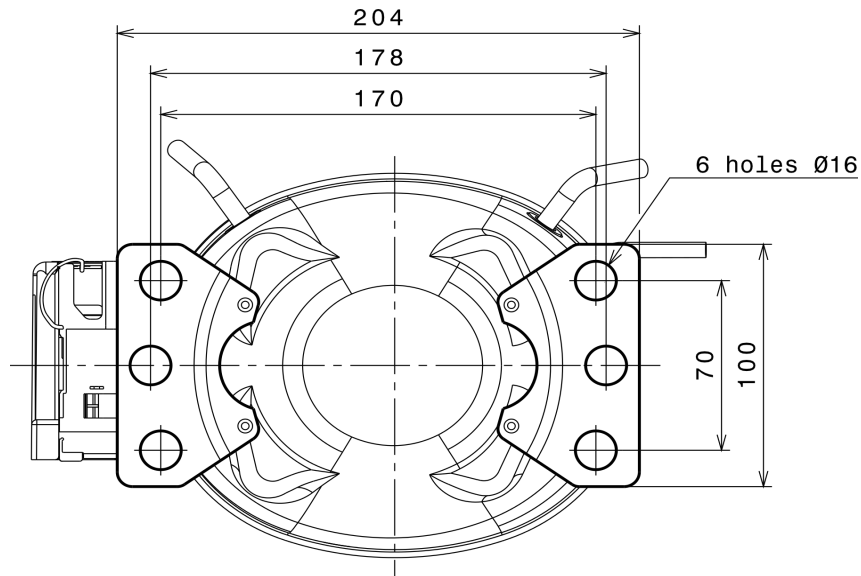
Equation	$x_1 + x_2Te + x_3Tc + x_4Te^2 + x_5TeTc$
----------	---

Technical Data Sheet

	DESIGNATION	INTERNAL DIAM.
1	Service	6,2 mm
2	Suction	6,2 mm
3	Discharge	4,9 mm

Technical Data Sheet

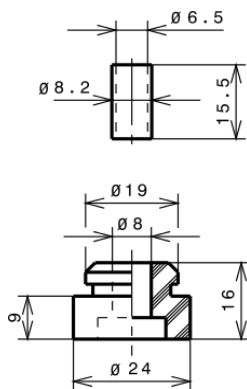
FIXINGS



SILENT BLOCKS (MOUNTING ACCESSORIES)

STANDARD

$\varnothing 16$ holes (170x70 net)



SOA

SOA R600a LBP

